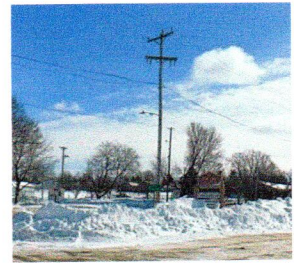


BUILDING & GROUNDS:

We had some real impressive snow banks piled up in January. They look puny compared to what we have now. February has been brutal between the snow, ice, and frigid temps like we haven't seen in years. And there is more of the same coming for at least 10 days. These new pictures emphasize the scope of the cleanup necessary to keep our property safe during weather systems like this. MANY thanks to Paul and everyone else who has helped clean up. Spring starts next month---we hope



Snow Mountains

On a brighter note our last electric bill was \$50 less than December. It appears that we can attribute this to the new LED lights that our guys installed. We must be good stewards of God's provision, so if you can think of other ways we can improve or conserve our resources, please mention it to Paul or the elders.

WANT TO SERVE? Please check out the bulletin board to see what supplies are needed or what projects we would like to complete. Choose an item, and let the office know when it is done. Thanks for all your help

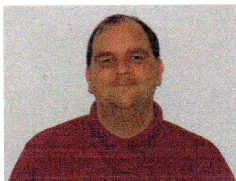
REACH: *New comer welcome mailers:* We sent out 8 welcome packets to people who have moved into the area. If you know of any new residents, please let us know. We will be sending out the mailers on March 13th.

ANNUAL CLOTHING DRIVE in April we will have a clothing giveaway. We are asking those who would like to donate their spring and summer clothing for this event, please drop them off at the church starting March 24th. Questions? Ask Pauline

- **The Jail Library Ministry** is an outreach to serve people who are incarcerated in the Vernon County Jail. We will be taking the third box to the jail soon. If you have some to donate, please leave them in the collection box. You never know which book might change the life of a prisoner.
- **Nursing Home Ministry** visits the local nursing homes and ministers to the resident's needs. Ruth reports that the residents of the nursing homes where we sang Christmas carols want to thank us. They enjoyed our songs. Contact Ruth Sinn if you'd like to participate. Phone 317-627-0017 or email rgsinn.78@gmail.com

If you have a heart for fellowship and/or reaching the lost in our community for Jesus, consider joining our group. We meet on 2nd Monday of each month and organize our gatherings and our community outreach.

Technology Ministry: Al has been working on a computer upgrade to improve the video quality on our website. He plans to have it up and running soon.



If you are sick or snowed in and can't get to church, remember that you can watch or listen to the sermons online. You can watch it live on Sunday morning if you go to our website www.viroquanewlife.com and click on the live feed button on the top bar. That will take you to YouTube, and you click on the button for live video. Be aware that only the sermon is recorded, so it doesn't come online until about 10:30

If you want to watch or listen to the sermon at another time, go to the website and click on the ministries button on the top bar. The drop down box has a Listen to Sermons and a Watch Sermons button that will take you to all the previously recorded sermons from way back. Al can also give you a CD recording of the sermons.

We are so blessed to have this talented man who is willing to use his abilities to help our church. Thanks Al and Tammy and Ruth, who also help on Sundays.

SNOWMAN LESSON (Condensed version)

Do you just love seeing the beautiful snow covering the dark landscape?

It turns a very dark and depressing winter day into a beautiful, sparkling clean landscape.

In fact, seeing a beautiful snow outside reminds me of Jesus. The snow is so pure and clean. It covers the dirty earth with pure white. Likewise, Jesus' life was pure and clean. Jesus covers us with his purity. God sees Jesus like we see the snow. Jesus covers our sins so that God sees pure hearts. When we trust in what Jesus did for us, he died on the cross, our sins are covered, like the snow covers the ground. The snow comes to cover the earth for free. Jesus offers us forgiveness and hope. They are also free

God makes every snowflake different and God created each person different. To God, we are unique and beautiful just like each snowflake!

Have you ever picked up a bunch of snowflakes and packed them together to make a snowman? One snowflake doesn't make a snowman...lots snowflakes do! The more snow pressed together for the same purpose—the bigger the snowman! Likewise, as more Christians work together for the same purpose, more can be accomplished and there is more joy for everyone! It is a joy to work together to build a snowman and it is a joy to work together to serve God.

The snowman lasts for a little while and when it melts, it changes from snow to water. This reminds us that when we receive Jesus as our Savior—our life changes.

He is our living water flowing in us! God's Living Water keeps us spiritually refreshed. As we work together with other Christians to serve God— the projects don't last forever, but the blessings the projects are to those that work together and for those that are touched by the project— the love of Jesus melts into each person and fills them with a little more understanding of God's love.

Whenever we feel burdened and our hearts are cold—think about the snowman and the beauty of the snow that God sent. Jesus is our source of hope. He warms our hearts and melts away our burdens when we trust in him.

Supported Missions update

Helping the World's Most Vulnerable



Lonnie Burley, Director of Short-Term Trips

Thank you for your prayers and support of the ministry of FAME. Through the support of our donors, FAME is able to share the love of Christ around the world through medical evangelism. We do this by funding sustainable healthcare projects, shipping medicines and supplies, and mobilizing short term trips

"As the Director of Short-term trips at FAME, I have the privilege of serving side by side with individuals who want nothing more than to tackle the injustice of no access to healthcare for the world's most vulnerable.

On a FAME Short-term mission trip, this can happen in multiple ways. Bringing relief from ongoing pain, skin rashes, infections, stomach problems, parasites, hypertension, and diabetes are all illnesses that can either be temporarily treated or diagnosed by a FAME team member at a medical camp on a trip. We also teach preventative health care lessons which are a very effective way to bring good health and restore happiness to the lives of people who live day to day with no access to healthcare. Donations to FAME provide us with the means to do all of this and more! Your gift contributes health to the whole person – physically, mentally, emotionally, and spiritually and God gets all the glory!"